



Papa Pump[®]

Papa Pump takes part in the 60th Anniversary of Festival of Britain on the South Bank, Central London

True to the original 1951 Festival of Britain, the recently opened 60th anniversary exhibition's 'Power and Production Land' celebrates British engineering and design with a strong focus on sustainability and resource conservation.

Papa Pump's ability to operate without needing any external power source so saving expensive fuel and ever scarcer treated mains water was the ideal choice to power a sustainable grey water irrigation system on a new staircase at the heart of the Festival's exhibition.

Using water from the South Bank's air conditioning units and drainage water beneath the Festival Hall (which would otherwise be wasted), recycled water is used to irrigate the flower beds rather than using precious mains water.



Photo of the new Stairs rising from behind Festival Hall to the Hayward Gallery in the background



The Stairs have flower beds at each level which is irrigated by the pump

When you visit South Bank- walk up the new stairs and grip the handrail next to the pump (which is on the mid section of the stairs) You will be able to feel the rhythmic pulse of the Pumps 'heart beat' (hence our logo).



Without using any external fuel or electricity – just the 'head' or height the water which can be as little as 1 foot.

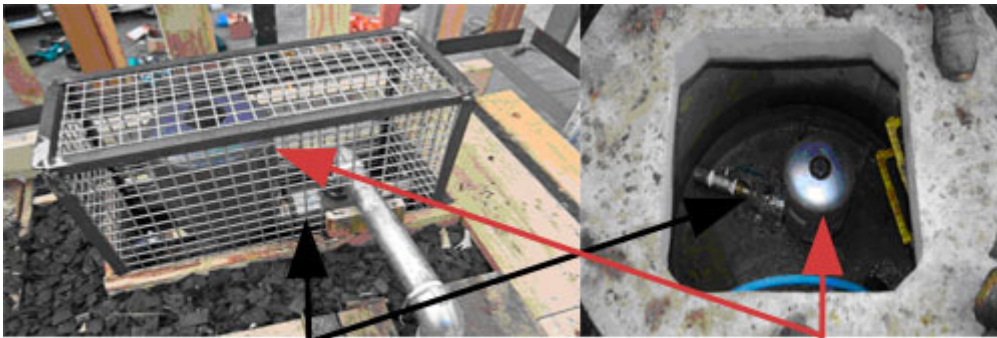
Our standard pump can move 18,000 litres a day across farms and off grid houses all over the world with the minimum maintenance.



Papa Pump®

Many 100's of Papa Pumps are irrigating crops, watering livestock and transporting water for human consumption all around the world. The Pump is small, lightweight but of durable construction it can be installed in many locations....such as half way up a set of stairs in central London. The Pump gives a lifetime of service with only one moving part, needs little maintenance.

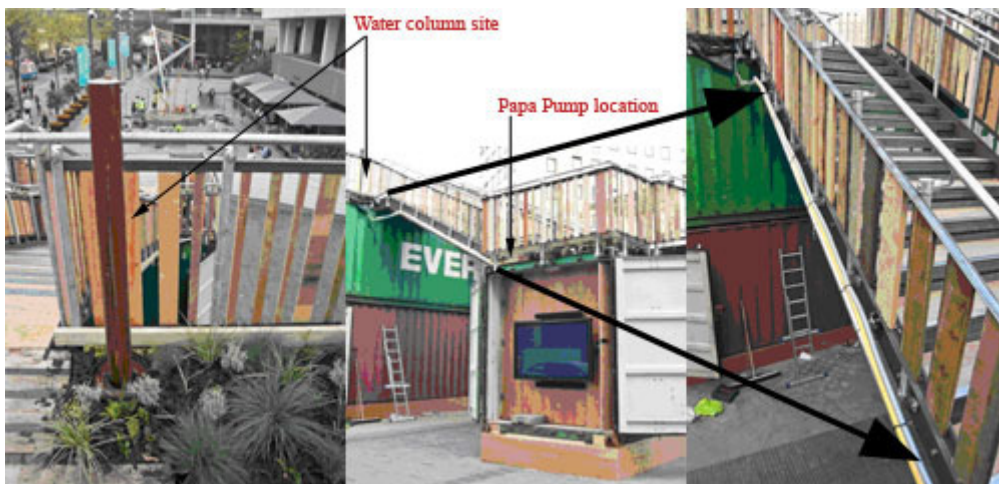
We have given our pump a cover for the Festival but for most installations it goes in its own protective housing – the left hand photo shows the Papa Pump installed on South Bank and the right hand one a pump supplying drinking water to livestock on one of the highest points of the South Downs National Park on the National Trust's property.



On the middle platform of the left hand staircase of the South Bank stairs you can see the Papa Pump here....

You can also see a standard pressure vessel here which fits on the back of our Pump

The Papa Pump has a patented valve inside which transfers the natural power of the water flowing down from the top container to the middle container (a drop of only 6 feet and distance of approx 15 feet) into a natural force which can pump the water some distance away up to the irrigation column on the top container where it then waters the garden by gravity.





Papa Pump®



Stand up by the Water Column at the top of the stairs and admire the view.

Go to our website; www.papapump.com to use our online enquiry form as well another interactive guides to selecting your site and our installation partners around the world.

The website also has informative videos for how our Papa Pump can save you money by reducing the domestic or commercial use of fuel or electricity to pump water as well as reduce wastage of precious mains water all over the World.

Keep in touch with us as we launch new products and open demonstration sites near you.